



*Let there be light where light is needed*



### Key product features:

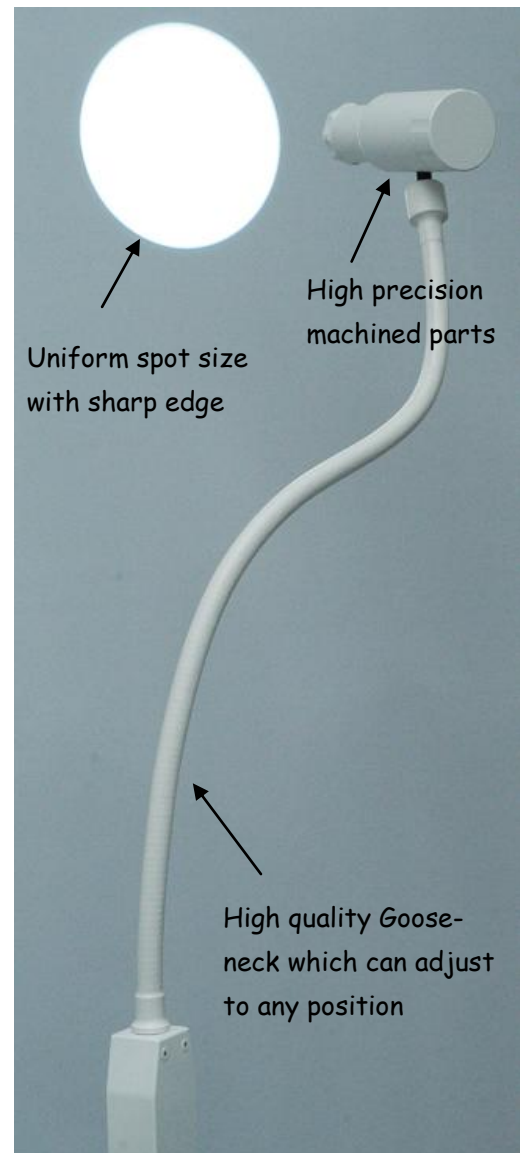
- Long lasting LED to provide cool light
- Uniform beam pattern with sharp edge
- Easy adjustment and flexing for accurate positioning with just a single hand
- Zoom adjustment to provide variable beam size
- Full range of dimming control
- Different mountings available

The **X-Zoom** is designed to be an examination light used in clinics and hospitals. It uses a state of art optics design with the latest LED technology to achieve cool but high luminosity light.

**X-Zoom** is designed with beam zooming and dimmer functions to cater different clinic environments with different examination purposes. The light head is mounted on a gooseneck which can adjust to any position with just a single hand.

The effective heat management system makes it runs cool and does not cause any heat stress to both physician and patient.

Different mountings are available for different installation purposes.



Light intensity is fully adjustable to avoid eye fatigue.

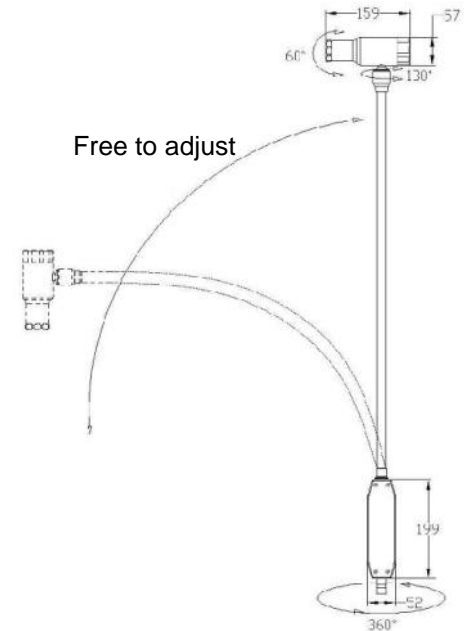


# Pharos Medical Device



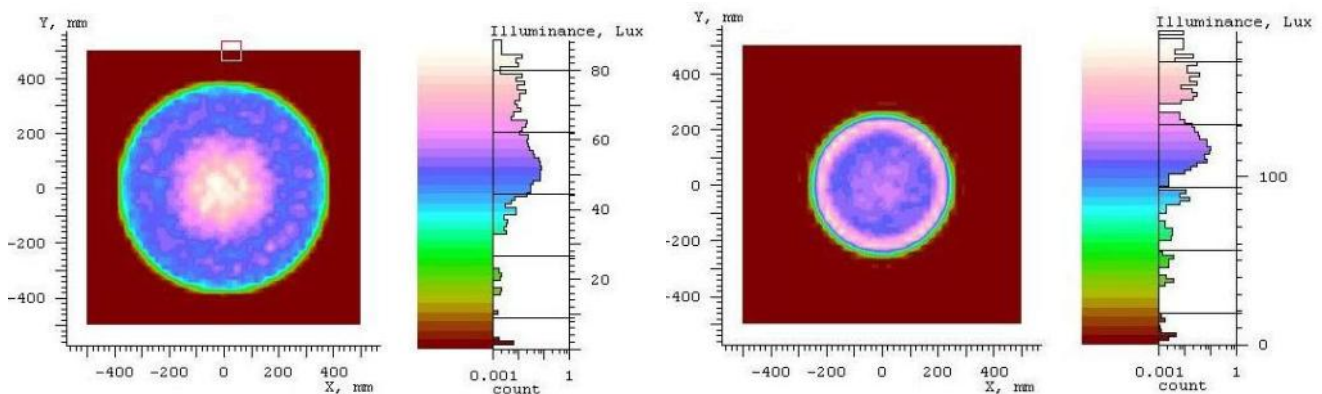
## Technical data of X-Zoom

<b>Light source</b>	LED
<b>Luminance at 300mm (lux)</b>	10000
<b>Color temperature</b>	6000K (as per customer request)
<b>Beam diameter at 300mm</b>	160 - 200 mm
<b>Zoom control system</b>	Multi-lens system
<b>Cable length</b>	2700 mm
<b>Main supply</b>	110 - 240Vac, 50-60 Hz
<b>Gooseneck length</b>	700 mm
<b>Gooseneck rotation</b>	540 deg.
<b>Height (exclude mounting)</b>	1090 mm
<b>Weight (exclude mounting)</b>	1.71 kg
<b>Special features</b>	Full dimming control, maintenance free and adjustable beam size
<b>Safety</b>	Design to comply with IEC 60601-1/ EN 60601-1
<b>Mounting</b>	Floor stand, table mount , or customize design
<b>Color</b>	Black, white or customize design



Color as per customer request

## Computer-aided stimulation for light beam pattern



Flood mode

Focus mode